

WELCOME TO THE FUTURE OF CYBER SECURITY

1400 SECURITY GATEWAYS



Fast. Simple. Secure.

Check Point 1400 Security Gateways are high performance, integrated devices offering firewall, VPN, antivirus, application visibility and control, URL filtering, email security and SandBlast Zero-Day Protection, all in compact form factors that are simple to configure and manage.



R30.10

Choose Check Point for Your Branch Office Security Solution



Secure

Comprehensive security, all working together to protect your organization



Powerful

Enable the strongest protections without compromising performance



Simple

Central management for ease of deployment and use

WELCOME TO THE FUTURE OF CYBER SECURITY

SPOTLIGHT

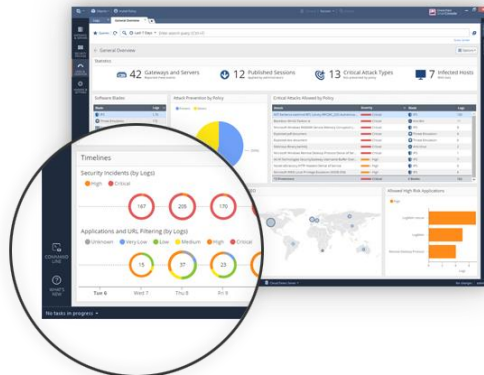
Advanced security, uncompromising performance

The Check Point 1400 Security Appliance family is a simple, affordable and easy to deploy all-in-one solution for delivering industry leading security to protect the weakest link in your enterprise network—the remote branch offices.

Protect against cyber threats with Check Point Threat Prevention all in a quiet, compact desktop form factor. Setup is done in minutes using our step-by-step configuration wizard. The 1400 Security Gateways are manageable centrally by means of the Check Point enterprise Security Management or Multi-Domain products. Available in two appliances, the 1430/1450 and the 1470/1490, these appliances come standard with eight (8) 1-Gigabit or sixteen (16) Ethernet ports respectively. Connect securely from any device directly or through secure authenticated Wi-Fi.

Comprehensive Protection

- ❖ Next Generation Firewall
- ❖ IPsec and SSL VPN
- ❖ Application Control and Web Filtering
- ❖ Intrusion Prevention
- ❖ Antivirus
- ❖ Anti-Bot
- ❖ Anti-Spam
- ❖ SandBlast Threat Emulation (sandboxing)

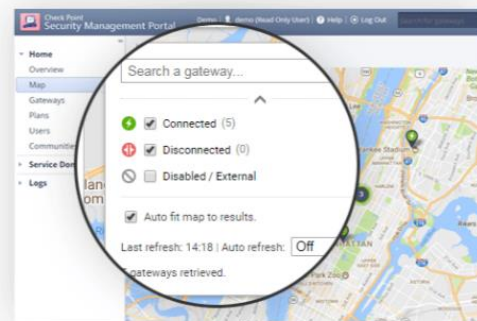


Centrally Managed with Full Threat Visibility

With one console, security teams can manage all aspects of security from policy to threat prevention – across the entire organization – on both physical and virtual environments. Consolidated management means increased operational efficiency.

Rapid Deployment

Easily manage the initial deployment of 1400 Security Appliances with the Zero Touch Cloud Service. Administrators apply the initial deployment configuration in the Zero Touch portal. When a gateway is connected to the internet for the first time, it fetches the settings automatically. The Zero Touch Cloud service also supports a REST API where you can further automate gateway provisioning.



STEP UP TO 5TH GENERATION CYBER SECURITY

Gen V security leaves the patch work and best-of-breed deployments of the past behind. Instead, it's characterized by an architecture that unifies all networks, cloud, and mobile, and supported by real time threat intelligence.



1430/1450 (Wi-Fi DSL options)

- 1 802.11n/ac wireless (optional)
- 2 6x 1GbE LAN ports
- 3 1x 1GbE DMZ port
- 4 1x 1GbE WAN port
- 5 RJ-45/micro USB Console port
- 6 DSL port
- 7 12V power connector
- 8 USB port

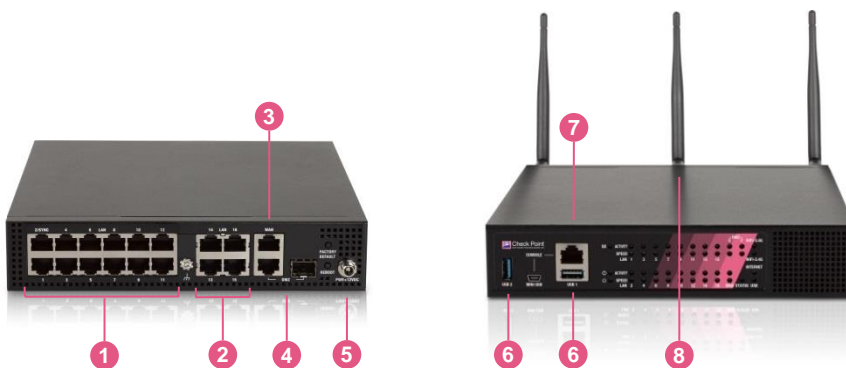


| | 1430 | 1450 |
|---|---|-------------------------------------|
| Ideal Testing Conditions | | |
| Firewall 1518 Byte UDP Packets (Mbps) | 2,000 | 2,500 |
| IPS Throughput (Mbps) | 325 | 575 |
| NGFW Throughput (Mbps) ¹ | 300 | 490 |
| Threat Prevention (Mbps) ² | 225 | 400 |
| VPN AES-128 Throughput (Mbps) | 275 | 500 |
| Connections per Second | 20,000 | 27,000 |
| Concurrent Connections | 500,000 | 500,000 |
| Real-World Production Conditions | | |
| Firewall Throughput (Mbps) | 900 | 1,100 |
| IPS Throughput (Mbps) | 175 | 225 |
| NGFW Throughput (Mbps) ¹ | 100 | 210 |
| Threat Prevention (Mbps) ² | 90 | 150 |
| Software | | |
| Security | Firewall, VPN, User Awareness, QoS, Application Control, URL Filtering, IPS, Anti-Bot, Antivirus, Anti-Spam and SandBlast Threat Emulation (sandboxing) | |
| Unicast, Multicast Routing | OSPFv2, BGPv4 and 4+, RIP, PIM (SM, DM, SSM), IGMP | |
| Mobile Access User License | 100 in default package, 150 maximum | 100 in default package, 150 maximum |
| Hardware | | |
| WAN | 1x 10/100/1000Base-T RJ-45 port | |
| DMZ | 1x 10/100/1000Base-T RJ-45 port | |
| LAN Switch | 6x 10/100/1000Base-T RJ-45 ports | |
| Wi-Fi (optional) | 802.11 b/g/n/ac MIMO 3x3 | |
| Radio Band (association rate) | 1 radio band: 2.4Ghz (max 450 Mbps) or 5Ghz (max 1300 Mbps) | |
| Console Port | 1x RJ-45, 1x Mini USB | |
| USB Port | 1x USB 3.0 | |
| SD Card Slot | Micro SDHC slot | |
| 3G/4G Modem Support | Yes | |
| DSL (optional) | VDSL: G.993.1 (VDSL), G.993.2 (VDSL2), G.993.5 (VDSL2 Vectoring), G.998.4 (G.INP) VDSL2 profiles: 8a, 8b, 8c, 8d, 12a, 12b, and 17a ADSL: Annex A (POTS), Annex B (ISDN), G.992.1 (ADSL), G.992.3 (ADSL2), G.992.5 (ADSL2+), Annex M (ADSL2/2+) ,Annex L Reach-extended (ADSL2) Dying Gasp, DSL Forum TR-067, TR-100, TR-114 Conformity | |
| Dimensions | | |
| Enclosure | Desktop | |
| Dimensions WxHxD | 210 x 42.5 x 155 mm, 8.3 x 1.7 x 6.1 in. | |
| Weight | 1.3 kg (2.8 lbs.) | |
| Environment | | |
| Operating / Storage | 0°C ~ 40°C / -45°C ~ 60°C (5~95%, non-condensing) | |
| Power Requirements | | |
| AC Input | 110 – 240V, 50 – 60 Hz | |
| Power Supply Rating | 12V/3.33A 40W desktop adaptor | |
| Power Consumption (Max) | 25W (non-Wi-Fi), 30W (Wi-Fi option) | |
| Heat Dissipation | 85.3 BTU/hr (non-Wi-Fi), 102.4 BTU/hr (Wi-Fi option) | |
| Certifications | | |
| Safety / Emissions / Environment | UL/c-UL, IEC 60950 CB / EMC: EN55022 Class B, FCC: Part 15 Class B / RoHS, REACH, WEEE | |

¹ Includes Firewall, Application Control and IPS ² Includes Firewall, Application Control, URL Filtering, IPS, Antivirus, Anti-Bot and SandBlast Zero-Day Protection

1470/1490 (PoE and Wi-Fi options)

- 1 12x 1GbE LAN ports
- 2 4x PoE 1GbE LAN ports (PoE option)
- 3 1x 1GbE WAN port
- 4 1x 1GbE copper/fiber DMZ port
- 5 12V power connector
- 6 2x USB ports
- 7 RJ-45/micro USB console port
- 8 802.11n/ac (Wi-Fi option)



| | 1470 | 1490 |
|---|---|-------------------------------------|
| Ideal Testing Conditions | | |
| Firewall 1518 Byte UDP Packets (Mbps) | 3,200 | 4,000 |
| IPS Throughput (Mbps) | 700 | 800 |
| NGFW Throughput (Mbps) ¹ | 625 | 800 |
| Threat Prevention (Mbps) ² | 500 | 550 |
| VPN AES-128 Throughput (Mbps) | 500 | 1,000 |
| Connections per Second | 30,000 | 40,000 |
| Concurrent Connections | 500,000 | 500,000 |
| Real-World Production Conditions | | |
| Firewall Throughput (Mbps) | 1,600 | 1,800 |
| IPS Throughput (Mbps) | 285 | 375 |
| NGFW Throughput (Mbps) ¹ | 240 | 310 |
| Threat Prevention (Mbps) ² | 175 | 220 |
| Software | | |
| Security | Firewall, VPN, User Awareness, QoS, Application Control, URL Filtering, IPS, Anti-Bot, Antivirus, Anti-Spam and SandBlast Threat Emulation (sandboxing) | |
| Unicast, Multicast Routing | OSPFv2, BGPv4 and 4+, RIP, PIM (SM, DM, SSM), IGMP | |
| Mobile Access User License | 200 in default package, 300 maximum | 200 in default package, 300 maximum |
| Hardware | | |
| WAN | 1x 10/100/1000Base-T RJ-45 port | |
| DMZ | 1x 10/100/1000Base-T RJ-45 / 1x 1000BaseF SFP (transceiver not included) port | |
| LAN Switch | 16x 10/100/1000Base-T RJ-45 ports (total) | |
| PoE Ports (optional) | 4x 10/100/1000Base-T RJ-45 out of the 16 LAN ports | |
| Wi-Fi (optional) | 802.11 b/g/n and 802.11 n/ac MIMO 3x3 | |
| Radio Band (association rate) | 2 concurrent: 2.4Ghz (max 450 Mbps) and 5Ghz (max 1300 Mbps) | |
| Console Port | 1x RJ-45, 1x Mini USB | |
| USB Port | 2x USB 3.0 | |
| SD Card Slot | Micro SDHC slot | |
| 3G/4G Modem Support | Yes | |
| Dimensions | | |
| Enclosure | Desktop | |
| Dimensions WxHxD | 210 x 42.5 x 200.5 mm, 8.3 x 1.7 x 7.9 in. | |
| Weight | 1.6 kg (3.6 lbs.) | |
| Environment | | |
| Operating / Storage | 0°C ~ 40°C / -45°C ~ 60°C (5~95%, non-condensing) | |
| Power Requirements | | |
| AC Input | 110 – 240V, 50 – 60 Hz | |
| Power Supply Rating | 12V/5.4A 65W, 12V/12.5A 150W (PoE option) | |
| Total Available PoE Power | Max load on each 4x PoE ports: 15.4 W (802.3af), or use only 2x PoE ports with max load of 31W (802.3at) each | |
| Power Consumption (Max) | 55W (wired), 60W (Wi-Fi option), 130W (PoE option) | |
| Heat Dissipation | 187.7 BTU/hr (wired), 204.7 BTU/hr (Wi-Fi option), 443.6 BTU/hr (PoE option) | |
| Certifications | | |
| Safety/Emissions/Environment | UL/c-UL, IEC 60950 CB / EMC: EN55022 Class B, FCC: Part 15 Class B / RoHS, REACH, WEEE | |

¹ Includes Firewall, Application Control and IPS ² Includes Firewall, Application Control, URL Filtering, IPS, Antivirus, Anti-Bot and SandBlast Zero-Day Protection

ORDERING INFORMATION

| WI-FI or WI-FI +DSL (1430/1450) APPLIANCE OPTION (replace –xx in the SKU to specify the Wi-Fi region) ¹ | | | |
|---|---------|--------------|-------------------------------|
| 1430 Security Appliance with Threat Prevention security suite | | | CPAP-SG1430-NGTP-W or WDSL-xx |
| 1430 Security Appliance with Threat Prevention security suite and SandBlast | | | CPAP-SG1430-NGTX-W or WDSL-xx |
| 1450 Security Appliance with Threat Prevention security suite | | | CPAP-SG1450-NGTP-W or WDSL-xx |
| 1450 Security Appliance with Threat Prevention security suite and SandBlast | | | CPAP-SG1450-NGTX-W or WDSL-xx |
| 1470 Security Appliance with Threat Prevention security suite | | | CPAP-SG1470-NGTP-W-xx |
| 1470 Security Appliance with Threat Prevention security suite and SandBlast | | | CPAP-SG1470-NGTX-W-xx |
| 1490 Security Appliance with Threat Prevention security suite | | | CPAP-SG1490-NGTP-W-xx |
| 1490 Security Appliance with Threat Prevention security suite and SandBlast | | | CPAP-SG1490-NGTX-W-xx |
| POWER OVER ETHERNET (PoE) APPLIANCE OPTION ¹ | | | |
| 1470 Security Appliance with Threat Prevention security suite, Wired, PoE | | | CPAP-SG1470-NGTP-PoE |
| 1470 Security Appliance with Threat Prevention security suite and SandBlast, Wired, PoE | | | CPAP-SG1470-NGTX-PoE |
| 1490 Security Appliance with Threat Prevention security suite, Wired, PoE | | | CPAP-SG1490-NGTP-PoE |
| 1490 Security Appliance with Threat Prevention security suite and SandBlast, Wired, PoE | | | CPAP-SG1490-NGTX-PoE |
| WIRED APPLIANCE ¹ | | | |
| 1430 Security Appliance with Threat Prevention security suite | | | CPAP-SG1430-NGTP |
| 1430 Security Appliance with Threat Prevention security suite and SandBlast | | | CPAP-SG1430-NGTX |
| 1450 Security Appliance with Threat Prevention security suite | | | CPAP-SG1450-NGTP |
| 1450 Security Appliance with Threat Prevention security suite and SandBlast | | | CPAP-SG1450-NGTX |
| 1470 Security Appliance with Threat Prevention security suite | | | CPAP-SG1470-NGTP |
| 1470 Security Appliance with Threat Prevention security suite and SandBlast | | | CPAP-SG1470-NGTX |
| 1490 Security Appliance with Threat Prevention security suite | | | CPAP-SG1490-NGTP |
| 1490 Security Appliance with Threat Prevention security suite and SandBlast | | | CPAP-SG1490-NGTX |
| WI-FI REGIONS (replace –xx in the SKU to specify the Wi-Fi region) | | | |
| USA, Canada | add -US | Israel | add –IL |
| Europe | add -EU | China | add –CN |
| Japan | add -JP | India, Chile | add –IN |
| Australia, Argentina | add -AU | New Zealand | add –NZ |
| Latin America, Singapore, Hong Kong, Thailand, Sri-Lanka | add -LA | | |

¹ Threat Prevention includes IPS, Application Control, URL Filtering, Antivirus, Anti-Bot, and Anti-Spam updates for the first year; SandBlast includes Threat Emulation (sandboxing).

EXTEND YOUR SOLUTION

| SECURITY SERVICE EXTENSION ¹ | |
|--|-------------------|
| Next Generation Threat Prevention Blades Package for 1 year for 14x0 Appliance | CPSB-NGTP-14x0-1Y |
| Next Generation Threat Prevention Blades Package and SandBlast for 1 year for 14x0 Appliance | CPSB-NGTX-14x0-1Y |
| ADDITIONAL SOFTWARE BLADES ² | |
| Mobile Access Blade for 50 concurrent connections | CPSB-MOB-50 |

¹ NGTP and NGTX SKUs for 2 and 3 years are available, see the online Product Catalog

² The base packages include a license for 100 (1430/1450) and 200 (1470/1490) concurrent Mobile Access users. The MOB license is additive.

| ACCESSORIES | |
|---|--------------------|
| SFP short range transceiver (for the DMZ 1000BaseF port) | CPAC-TR-1SX-1200R |
| SFP long range transceiver (for the DMZ 1000BaseF port) | CPAC-TR-1LX-1200R |
| SD memory card 8 GB | CPAC-8GB-SD-1200R |
| SD memory card 32 GB | CPAC-32GB-SD-1200R |
| 1400 appliance single/dual chassis rack shelf kit | CPAC-RM-700/1400 |
| Additional/Replacement AC Power Supply for 770, 790, 1470 and 1490 appliances | CPAC-PSU-790/1490 |

CONTACT US

EMAIL: INFO@CHECKPOINT.COM

WEB: WWW.CHECKPOINT.COM